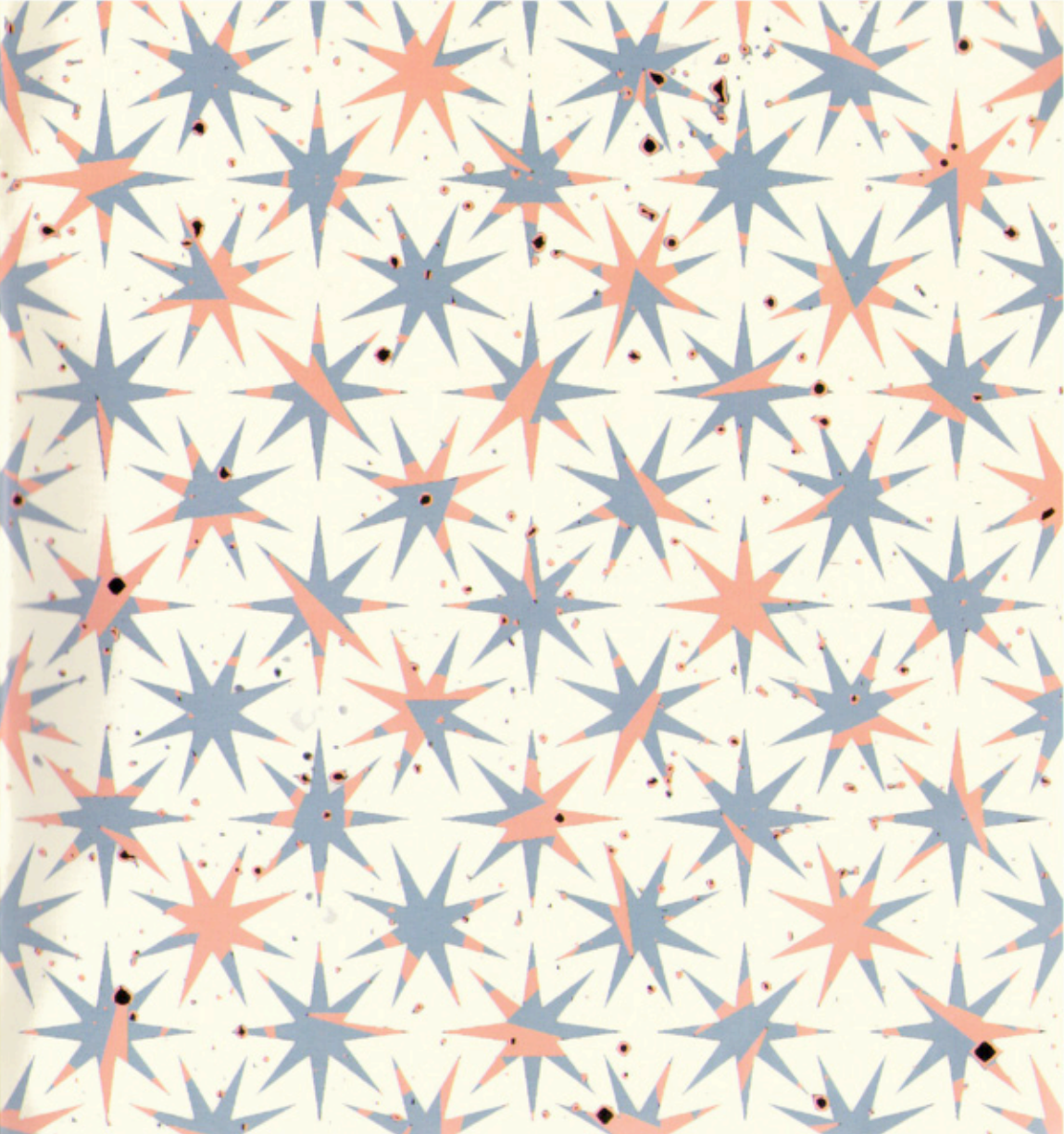


PLAYBOX 2000





from the ARTISTIC DIRECTOR



WELCOME to a year of Australian theatre which sees the return of some of our favourite playwrights - and the Playbox debut of some exciting new voices. Following outstanding success with our 1999 'state of the nation' season, Playbox 2000 will adventure with some thirteen productions — eleven of which comprise our subscription programme.

The year 2000 will see us undertaking several major tours to six states - a record number for an Australian theatre company - including two productions to Sydney during the Olympic year. Playbox 2000 continues to bring you the best of new writing from across the nation with a contrasting range of colourful, original and enriching plays.

We are proud that you, our audience, continue to join us in increasing numbers on a voyage of discovery and development. This year we are redoubling our efforts to offer more diversity, more opportunities for artists - and lower prices. We are introducing a new approach to premiering work: *Inside2000*. This is a festival-style event that offers actors and audiences the now rare opportunity of participating in a repertory ensemble.

Playbox subscribers have long endorsed our belief that theatre should connect with contemporary life and know well how timely some of our programming has been. Playbox 2000 will continue to illuminate, provoke, surprise and delight.

When you subscribe to Playbox, you join a passionate family of theatre-lovers passionately interested in the life of the nation - and passionately curious about how it is reflected and interpreted back to us by the best writers in the land.

Welcome aboard.



AUBREY MELLOR

PLAYBOX 2000 *at home*

SECRET BRIDESMAIDS' BUSINESS

by **ELIZABETH COLEMAN**
directed by **CATHERINE HILL**
OPENS **JANUARY 28** IN THE MERLYN

FACE TO FACE

by **DAVID WILLIAMSON**
directed by **AUBREY MELLOR**
OPENS **MARCH 1** IN THE MERLYN

INSIDE2000

APRIL 4 TO MAY 13 IN THE BECKETT
MARATHON DAY ON **MAY 13**

THE GOLDBERG VARIATIONS

by **RON ELISHA**
directed by **MAX GILLIES**
OPENS **MAY 24** IN THE BECKETT

CRAZY BRAVE

by **MICHAEL GURR**
directed by **BRUCE MYLES**
OPENS **JUNE 28** IN THE MERLYN

SWEET ROAD

by **DEBRA OSWALD**
directed by **AUBREY MELLOR**
a co-production with
State Theatre South Australia
OPENS **AUGUST 2** IN THE MERLYN

MEAT PARTY

by **DUONG LE QUY**
directed by **MICHAEL KANTOR**
in association with the Melbourne Festival
and the Vietnamese Arts
Cultural Exchange Programme
OPENS **OCTOBER 11** IN THE MERLYN

ELEGY

by **JODI GALLAGHER**
directed by **TOM HEALEY**
OPENS **APRIL 5**

SO WET

by **SAMANTHA BEWS**
directed by **NANCY BLACK**
and

LIKE A METAPHOR

written & directed by
GABRIELLE MACDONALD
OPENS **APRIL 12**

BABY X

by **CAMPION DECENT**
directed by **NOEL JORDAN**
OPENS **APRIL 19**

VIOLET INC.

by **PAM LEVERSHA**
directed by **MELANIE BEDDIE**
OPENS **APRIL 26**

PLAYBOX 2000 *on tour*

SECRET BRIDESMAIDS' BUSINESS

by **ELIZABETH COLEMAN**

directed by **CATHERINE HILL**

WESTERN AUSTRALIA

ALBANY, MARGARET RIVER,
BUNBURY, PERTH, KALGOORLIE,
GERALDTON, KARRATHA

QUEENSLAND

CAIRNS, TOWNSVILLE, AYR, MACKAY,
ROCKHAMPTON, GOLD COAST, BRISBANE,
NAMBOUR, TOOWOOMBA

NEW SOUTH WALES

WOLLONGONG, GRIFFITH,
WAGGA WAGGA, WANGARATTA,
TAREE NORTH, ORANGE, BATHURST

ACT

CANBERRA

VICTORIA

MELBOURNE, FRANKSTON,
NUNAWADING, MOONEE PONDS,
MOOROOPNA, BENDIGO, BALLARAT,
GEELONG, WARRNAMBOOL,
PRESTON, WARRAGUL

TASMANIA

HOBART, LAUNCESTON

SOUTH AUSTRALIA

ADELAIDE, RENMARK, PORT PIRIE,
WHYALLA, MOUNT GAMBIER

SWEET ROAD

by **DEBRA OSWALD**

directed by **AUBREY MELLOR**

a co-production with

State Theatre South Australia

ADELAIDE

STATE THEATRE SOUTH AUSTRALIA

STOLEN

by **JANE HARRISON**

directed by **WESLEY ENOCH**

a co-production with Ilbijerri Aboriginal and
Torres Strait Islander Theatre Co-operative

SYDNEY

COMPANY B BELVOIR

ADELAIDE

STATE THEATRE SOUTH AUSTRALIA

NIGHTFALL

by **JOANNA MURRAY-SMITH**

directed by **JENNY KEMP**

SYDNEY

SYDNEY THEATRE COMPANY





secret
BRIDESMAIDS'
business

by **ELIZABETH COLEMAN**
directed by **CATHERINE HILL**
design **SHAUN GURTON**

RETURN SEASON

'He adores Meg. I can see it in his eyes...

I haven't seen her this happy since we won the ABBA competition in year four.'

Following its record breaking Melbourne and Sydney seasons, *Secret Bridesmaids' Business* returns to The Malthouse to begin its six state tour.

All those who loved her - and those who missed out the first time - are invited to join Meg Bacon and her friends the night before the big day.

In this deliciously funny play bridesmaids Lucy and Angela are faced with a dilemma that threatens to blow Meg's dream wedding apart - would you tell your best friend the truth?

Elizabeth Coleman's *It's My Party (And I'll Die if I Want To)* has just been produced Off-Broadway. Also a writer for film and television, Elizabeth wrote for the first season of *Sea Change*.

'A big-day romp of the highest order' SUN HERALD

'Coleman's exciting new voice will be cause for celebration in theatre's everywhere' THE AUSTRALIAN FINANCIAL REVIEW

SEASON OPENS **JANUARY 28** IN THE MERLYN

A GREAT GIFT IDEA: YOU CAN ALSO INCLUDE **SECRET BRIDESMAIDS' BUSINESS** IN YOUR SUBSCRIPTION AS A GIFT. WE WILL SEND YOU THE TICKETS SPECIALLY GIFT-WRAPPED TO GIVE TO SOMEONE YOU LOVE. DETAILS AT STEP 9 OF THE BOOKING FORM.



ELIZABETH COLEMAN





FACE TO FACE

by **DAVID WILLIAMSON**
directed by **AUBREY MELLOR**

VICTORIAN PREMIERE

'I got skills. I'm a trained fitter and turner. But suddenly we got no manufacturing industry any more. Because companies can go to China and pay one dollar a day and two bowls of rice.'

When Glen is sacked from his labouring job he doesn't go quietly. The sight of his boss' Mercedes Benz proves too great a temptation. His actions result in ten people locked in one room - all resisting the truth about themselves.

Face to Face reveals a revolutionary practice in transformative justice - community conferencing. Workmates, lovers, friends and family are brought face to face with the truth and emotions tumble out, uncensored and raw. A court room drama - without lawyers!

David Williamson's new play is essential viewing. It erupts from the core of the modern work-place and showers us with unexpected sparks.

'Engrossing... powerful stuff... drama, comedy and tension' SUNDAY TELEGRAPH

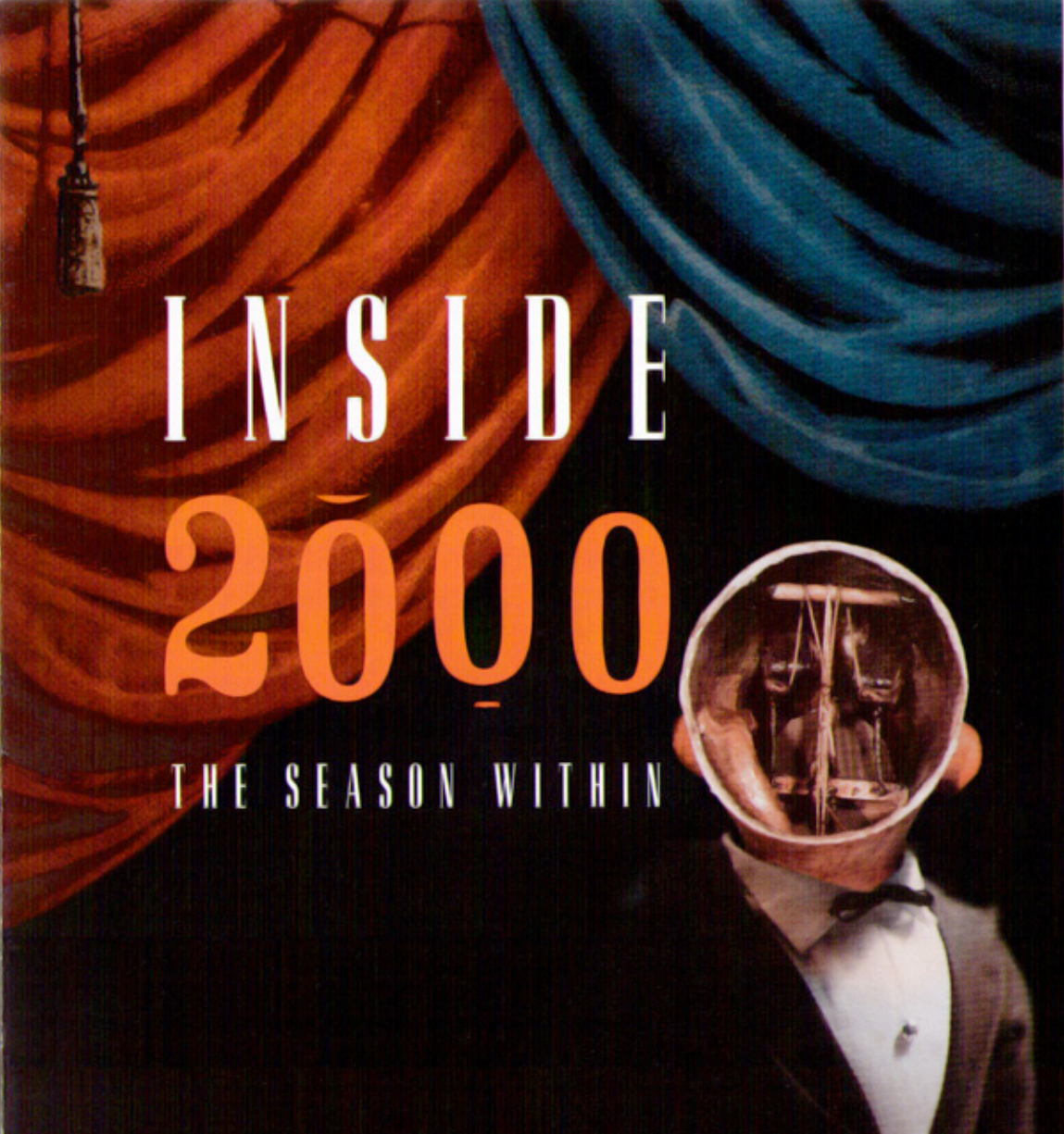
'Williamson's testament to the huge reservoir of decency in the human spirit' SUN HERALD

SEASON OPENS **MARCH 1** IN THE MERLYN
WRITERS' FORUM FEBRUARY 25



DAVID WILLIAMSON



The image features a man in a tuxedo whose head is replaced by a scale of justice. The background consists of heavy, draped curtains, with a red section on the left and a blue section on the right. The title 'INSIDE 2000' is prominently displayed in the center, with 'INSIDE' in white and '2000' in orange. Below the title, the subtitle 'THE SEASON WITHIN' is written in white. The overall mood is dramatic and symbolic.

INSIDE
2000

THE SEASON WITHIN

Something new is on the burner at Playbox...

- ★ *Inside2000* features an ensemble of actors presenting five plays over six weeks, culminating in a marathon day of all five works in one day.
- ★ *Inside2000* is queer comedy, sensuous drama, performance art and quirky surrealism.
- ★ *Inside2000* is a celebration of Melbourne's theatrical diversity.
- ★ *Inside2000* is an event in itself offering a generous discount for subscribers to the whole package of five plays for the equivalent cost of two Playbox 2000 shows.
- ★ *Inside2000* features a special Writers' Forum with all five playwrights discussing their work, collaborating with an ensemble and the experience of sharing space, design and royalties!

INSIDE2000 BEGINS APRIL 5 IN THE BECKETT ★ WRITERS' FORUM MARCH 31

INSIDE2000: PARENTAL GUIDANCE RECOMMENDED. IT CONTAINS ADULT THEMES AND SOME EXPLICIT LANGUAGE. WARNING! ACTORS REMAIN FULLY CLOTHED

ELEGY

by JODI GALLAGHER

directed by TOM HEALEY

'And I thought about our house on the pier. I went back to the breakwater, looking for you. There's no trace that we were ever there. You huffed and you puffed and blew the house down.'

An elegy for two sisters: Alice - witty, acerbic, mildly agoraphobic - and Mel - journeywoman, drifter, junkie. They cohabit a private world of nihilism, shared lovers and a mutual horror of New Age Boomer spiritualism.

But when Mel spoils the party by dying, Alice is forced to reckon with herself; to embark upon a journey of remembrance, forgiveness and faith.

OPENS **APRIL 5**

JODI GALLAGHER





So Wet

by SAMANTHA BEWS
directed by NANCY BLACK

'I lost this boy to this other boy. I feel like going out. Late.'

Silv is twenty-something, an aspiring advertising executive obsessed with image. Image fills her days and fuels her fantasies. Silv is set for an all-nighter.

Warehouse parties. Deserted street corners. The night starts with a hiccup and ends in extremis.

Erotic, witty and laced with irony, *So Wet* is a tale of longing and getting what you want when becoming a 'thoroughly modern lady'.

AND

like a metaphor

written and directed by
GABRIELLE MACDONALD

sculptural installation
by FLEUR SUMMERS

*'and I sit here and it is the end of the day and
all is soft in me I am leaving my body and cannot trust anything'*

Like a Metaphor is 'four and a half monologues'. A language-journey through a series of refractions, turning points and tiny visceral moments. A woman's sensual examination of bodily experiences.

OPENS APRIL 12



baby

by **CAMPION DECENT**
directed by **NOEL JORDAN**

by arrangement
with **Sydney Gay** and
Lesbian Mardi Gras

'Baby X: Two mums and my dad's a fruit. To be safe, you could put aside some therapy dollars for when I hit puberty.'

Georgie and Evelyn - lesbian couple in search of gay sperm donor.
Enter Adam - and Baby X is conceived.

Baby X is a nine month journey starting on the lip of a volcano and finishing in the deep evanescence of the moon. The gestation of *Baby X* rockets Adam through a heady path of confusion, denial and exultation - smashing a few notions of traditional family as he goes.

Fabulously theatrical and very very queer, *Baby X* is a provocative and hilarious vision of family in the new world.

OPENS **APRIL 19**



CAMPION DECENT

VIOLET INC.

by PAM LEVERSHA
directed by MELANIE BEDDIE

a co-production with
The Branch

'He started placing her in-the landscape. Her figure gets smaller and smaller alongside these giant gumtrees... Over a period of years she slowly recedes into the distance.'

Violet Farenheit: brilliant, savage, inspiring - her spirit irradiates the lovers and acolytes who surround her. Thirty years later, they are still struggling to exorcise her legacy.

Violet Inc. pits memory against history. The 1960s against the 1990s. Parochialism against Internationalism. It places the Lucky Country on the shelf of the Global Supermarket and questions our restless desire to reinvent ourselves.

OPENS APRIL 26





THE GOLDBERG VARIATIONS

by **RON ELISHA**

directed by **MAX GILLIES**

design **SHAUN GURTON**

WORLD PREMIERE

'Well ladies and gentlemen, hold onto your yamulkas, because bar-mitzvahs are never going to be the same again!...'

A Jewish family comedy chronicling the Goldbergs over twenty years. Vivid, wonderfully eccentric and tender, *The Goldberg Variations* is about filial ties and a family's need to express its true feelings. When the blind piano player, Sol, is asked to write a speech, he begins a journey into a new life of laughter and love - and the occasional furtive tear.

Marking a welcome return of the acclaimed author of *The Levine Comedy* and *In Duty Bound*, *The Goldberg Variations* is a joyful and poignant affirmation of family.

Ron Elisha won AWGIES for both *Einstein* and *Two*. His numerous other works include the Playbox premieres *Safe House* and *Esterhaz*.

'...compelling, civilising, provocative, fiercely literate...'

DAILY MAIL, LONDON

'...one of our leading playwrights. His combination of comic writing and serious critical message is masterly.' THE AUSTRALIAN JEWISH NEWS

SEASON OPENS **MAY 24** IN THE BECKETT

WRITERS' FORUM MAY 19



RON ELISHA





CRAZY BRAVE

by **MICHAEL GURR**
directed by **BRUCE MYLES**
design **JUDITH COBB**
lighting design **GLENN HUGHES**
composer **ANDREW PENDLEBURY**

WORLD PREMIERE

'There is brave. There is very brave. And if you want to change the world - there is crazy brave.'

Alice Ford is crazy brave. She belongs to a group that has no faith in mainstream politics. They try to bring about change through the guerilla tactics of urban nuisance. If they believed in putting out press releases, they'd be famous. But they are from the invisible Melbourne - the city that goes unreported.

Harold Hoffman, long ago celebrated as a champion of the underdog, now lives an anonymous life in a city hotel. Nick Feast, a radio journalist, wants to resurrect Harold as a fallen hero. But Nick is also on the trail of something much more personal.

Love, allegiance and blood intimately connect Alice, Harold and Nick. Suddenly their lives are accelerated when Alice's group take their actions onto a new level of danger. Each of them is forced to find a new definition of 'brave' - both personal and political.

Humane, witty, passionate, Michael Gurr's many award-winning plays chart the changing course of contemporary life. His latest play is a must-see.

'One of Australia's most accomplished and interesting playwrights.'

THE BULLETIN

'...Gurr likes to take a knife to his subjects and peel them to the core...'

SYDNEY MORNING HERALD

SEASON OPENS **JUNE 28** IN THE MERLYN

WRITERS' FORUM JUNE 23



MICHAEL GURR



SWEET ROAD

by **DEBRA OSWALD**
directed by **AUBREY MELLOR**
design **KATHRYN SPROUL**

WORLD PREMIERE

Co-Production with State Theatre
South Australia

*'I couldn't look at her after the accident. There was too much feeling.
Didn't think I could handle so much without - without disintegrating or - I dunno...
My body wasn't strong enough to let that much feeling go through it.'*

In the outback, several stories cross paths on the road, in service stations, caravan parks and while hitchhiking under the stars. Some of the travellers are blindly determined to reach their destination while others are trying to find a highway - any highway - to anywhere.

Written with vitality and compassion, Oswald's play explores the aspirations and idiosyncrasies of ordinary people. *Sweet Road* is driven by the force within the vast land we occupy - and seem compelled to traverse.

Debra Oswald is a writer of theatre, television and youth fiction. Her award-winning plays include *Dags*, *Gary's House* and (the singles-bar) *Carol in Confidentially Yours*. Her writing for television includes *Wildside*, *Police Rescue* and *Bananas In Pyjamas*.

'Oswald has a genuine instinct for drama... moving and ultimately inspiring' SYDNEY MORNING HERALD

'...one of Australia's most successful writers' THE AGE

SEASON OPENS **AUGUST 2** IN THE MERLYN
WRITERS' FORUM JULY 28



DEBRA OSWALD



MEAT PARTY

by **DUONG LE QUY**
directed by **MICHAEL KANTOR**

WORLD PREMIERE

in association with the
Melbourne Festival and the
Vietnamese Arts Cultural
Exchange Program

'Every now and then we hear a mine go off and we think the old Crone's been killed. But then, after a few days, people see her again. Wandering the sand dunes. It seems she's protected by the souls of the dead.'

An Australian woman returns to the place of her father's death - land-mined and uninhabitable. Among a sea of spirits, ideology and broken dreams, she pieces together the truth about her father's death and the truth about heroism.

Meat Party is a poetic cry from the heart - inspired by a yearning for a world without war.

This magical, highly visual play by Vietnamese/Australian writer Duong Le Quy is the winner of the 1999 Playbox AsiaLink - Asian/Australian Playwriting Competition.

'...passionate and theatrically vivid' THE SUN HERALD about MARKET OF LIVES

'Duong Le Quy's strong artistic vision and leadership... has achieved many successful programs both here in Australia and in Vietnam.' CHERYLE YIN-LO NSW MINISTRY FOR THE ARTS

SEASON OPENS **OCTOBER 11** IN THE MERLYN
WRITERS' FORUM OCTOBER 6



DUONG LE QUY



the BOTTOM LINE

The more you buy the more you save. ✱ Full Season (6 plays plus Inside2000) subscribers can save up to 30%. ✱ Enjoy 10 nights for as little as \$17.80* each.

✱ Subscribers who purchase five or six plays plus Inside2000 can also take advantage of the Deferred Payment Plan - pay as you go. ✱ Treat yourself to the full season, but if you then find you have to miss a show, share your tickets with friends.

✱ Add extra tickets at the discounted subscriber rates at any time.

*Concession subscription - preview, Monday night and matinees

What's so special about 1973? Anyone born in 1973 or later is able to book a Playbox Youth Subscription at our concession price. All you have to be is 26 years or younger and send us proof of age with your booking form. Simple.

Concessions. If you are a pensioner, senior, student, MEAA member or unemployed you are entitled to a concession subscription. Just include your concession number with the booking form.

WHY PAY NOW?

An increasingly popular option for subscribers is the Deferred Payment Plan. Playbox 2000 subscribers purchasing five or six play packages plus the complete *Inside2000* season are entitled to select this payment option.

Your credit card is debited prior to each production and your tickets will be sent two weeks prior to the opening of each play. Additions such as pre-booked programmes, parking vouchers and tax deductible donations will be processed at the time of the first instalment. Please note that you are committed to the total value of the subscription package and no refunds are possible.




SUBSCRIBER BENEFITS


Each year Playbox subscribers are offered a string of benefits: from free forums to free movie passes; discounted books to discounted events. Full details of the 2000 benefits will be sent with your tickets and they include:

The Age Writers' Forums - FREE for subscribers. The Age Writers' Forums are a great way to hear the aspirations and inspirations of our writers. Starting at 6pm on the night of the first preview it is an hour with the playwright expanding on themes, the writing process and answering your questions. With a complimentary drink afterwards, you can meet other subscribers and chat with the writer. To register your interest in these forums please mark Step 7 of the booking form.

Discovery Night. This is your chance to meet the artists behind each production. Discovery Nights are friendly and informal and allow you to ask those tough questions of the actors, director and designers. Tickets can be secured by booking for the appropriate 6.30pm performance on the booking form.

Free ticket exchange. Ticket exchange is a free service for Playbox subscribers. Simply return the tickets to The Malthouse Box Office at least 48 hours prior to the performance date and time on the ticket. Unfortunately we are unable to give refunds and exchange lost tickets. Ticket exchanges are only possible to performances in the same production.

Parking and programmes. Subscribers may pre-book parking at The  Malthouse Car Park in Miles Street for \$4 per car (usually \$5) and programmes (including the script) for \$8 (usually \$9). Just mark Step 2 of the booking form.

'Live at The Malthouse'. This quarterly newsletter provides the latest information on events in and around The  Malthouse. It contains discount ticket offers and free movie passes - all for subscribers.




PLAYBOX *at* THE MALTHOUSE


PLAYBOX

Playbox is dedicated to the creation, interpretation and promotion of Australian theatre. Since its foundation in 1976, the company has gained a reputation for the presentation of dynamic and progressive drama which reflects our diversity, traditions and place in the contemporary world.

Playbox has pioneered links with the performing arts of the Asia Pacific region and has toured numerous productions throughout this region, as well as introducing various Asian performing arts companies and artists to Australia.

THE MALTHOUSE

Located in the heart of Melbourne's arts precinct, The  Malthouse is a lively and versatile venue that has been home to Playbox, its resident theatre company, since opening in 1990.

Originally an historic malting house, The  Malthouse offers patrons a choice of two flexible theatres, The Merlyn and The Beckett, as well as rehearsal and function rooms, gallery, bar, café and catering facilities.



YOU SHOULD KNOW...

GENERAL ADMISSION.

All seating at The Malthouse is unreserved.

A prime feature of our venue is the flexibility of the staging formations which means we cannot number the seats.

DOORS OPEN. Doors open 20 minutes before each performance to allow time to select a seat.

LATECOMERS. Latecomers cannot be admitted until a suitable break in the performance.

PREVIEWS. Preview tickets offer you the opportunity to see a show prior to Opening Night. The tickets are sold at a discounted price as final adjustments to the production may be required.

BOX OFFICE HOURS. The Malthouse Box Office is open Monday to Saturday from 9am (evening Box Office hours vary according to scheduled performances).

PERFORMANCE TIMES.


MONDAY AND TUESDAY 6.30pm

WEDNESDAY TO SATURDAY 8pm

SATURDAY MATINEE 2pm* or 4pm
(* one per production)

THURSDAY MATINEE 1pm
(one per production)

ACCESS. If you require wheelchair access or other assistance at The Malthouse please advise our Box Office when making your booking.

PARKING. Limited affordable parking is available at The  Malthouse Carpark - 57 Miles Street (off Sturt Street). On street parking is also available on Dodds, Sturt and Grant Streets.

PUBLIC TRANSPORT. Trams stop close to The Malthouse on Sturt Street. Catch a No. 1 South Melbourne Tram from Swanston Street and alight at Stop 19.

For bookings and information:

TELEPHONE 03 9685 5111 * FACSIMILE 03 9685 5112



PLAYBOX 2000 TICKETS

PLAYBOX 2000 SUBSCRIPTIONS

PREVIEWS, MATINEES *and* MONDAY EVENINGS

	FULL PRICE	CONCESSION
FULL SEASON: 6 PLAYS + <i>INSIDE2000</i> (all four nights)	\$210	\$178
5 PLAYS + <i>INSIDE2000</i> (all four nights)	\$207	\$175
6 PLAYS	\$162	\$138
5 PLAYS	\$159	\$135
ADDITIONAL SUBSCRIBER TICKETS: <i>INSIDE2000</i> (each ticket)	\$15	\$12
OTHER PLAYS	\$32	\$27

TUESDAY *to* SATURDAY EVENINGS

	FULL PRICE	CONCESSION
FULL SEASON: 6 PLAYS + <i>INSIDE2000</i> (all four nights)	\$241.50	\$198
5 PLAYS + <i>INSIDE2000</i> (all four nights)	\$233	\$194
6 PLAYS	\$181.50	\$150
5 PLAYS	\$173	\$146
ADDITIONAL SUBSCRIBER TICKETS: <i>INSIDE2000</i> (each ticket)	\$20	\$15
OTHER PLAYS	\$34.50	\$29.50

PLAYBOX 2000 SINGLE TICKETS

	FULL PRICE	CONCESSION
<i>Playbox single ticket sales begin on January 1, 2000</i>		
PREVIEWS, MATINEES AND MONDAY EVENINGS	\$35	\$29
TUESDAY TO SATURDAY EVENINGS	\$39	\$32
GROUPS 10 OR MORE	\$29	
GROUPS 20 OR MORE (PLUS TWO COMPLIMENTARY TICKETS)	\$26	
STUDENT GROUPS* 10 OR MORE (with special arrangement for teachers)	\$14	

* Contact Playbox Education on 03 9685 5165

All prices are inclusive of GST where applicable.



AUSTRALIAN CONTEMPORARY THEATRE
PLAYBOX

PATRONS

Dorothy Hewett, John Romeril, David Williamson

BOARD OF DIRECTORS

Margaret Jackson (Chairman),
Kate Abrahams, Nereo Brezzi, Douglas Butler,
Paul Gardner, Joan Kirner, Harold Mitchell,
Haddon Storey, John Wood

Artistic Director **Aubrey Mellor**
General Manager **Jill Smith**

Artistic Associate **Tom Healey**
Artistic Coordinator **Tania Leong**
Literary Manager **Malcolm Robertson**

Administrator **Sarah Masters**
Assistant to the General Manager **Jane Adair**
Receptionist/Office Assistant **Amaara Raheem**

Marketing Manager **Damien Hodgkinson**
(Mollison Consulting)

Publicity Manager **Tania Angelini**
Education Officers **Christine Lucas-Pannam,**
Liz Welch (1999), **Margaret Steven** (2000)

Production Manager (Playbox) **Andrew Barker**
Production Manager (Malthouse) **Michele Preshaw**
Technical Manager (Playbox) **Baird McKenna**
Wardrobe Coordinator **Tania Trusler**
Workshop Manager **David Roberts**
Head Technician (Malthouse) **Frank Soffels**
Head Mechanist (Malthouse) **Allan Maguire**

Venue Manager **Peter Hannah**
Box Office Manager **Serena Burchell**
Front of House Manager **Attel Martschinke**
Café and Catering Manager **Victoria Gluth**
Assistant Café and Catering Manager **Todd Sampson**

BOX OFFICE (61 3) 9685 5111 • ADMINISTRATION (61 3) 9685 5100
MALTHOUSE CATERING (61 3) 9685 5131 • FACSIMILE (61 3) 9685 5112
EMAIL admin@playbox.com.au • WEB PAGE www.playbox.com.au
ADDRESS **Playbox at The @Malthouse**
113 Sturt Street, Southbank 3006 Victoria Australia

If you already have a Playbox 2000 brochure please pass this copy to someone who may enjoy our season.

Brochure design and illustration **Peter Long**
Playwrights' photography **Lyn Pool** and **Heidrun Löhr**

This season brochure and launch would not have been possible without the generous support of:
Kate Abrahams, Sarah Box, Kate Ellis, David Franzke, Paul Gardner, Brian Kovacic, Glynis Teo,
Andrew Venturoni - Holmes Digital Printing, Horniak & Canny, Craig Gardner - OIT,
Michele Schot, Sydney Gay and Lesbian Mardi Gras, Belynda Fisher - World Class,
Peter Wood - Company B, our artists, front of house staff, workshop and technical staff
and all the participants in Playbox 2000.



with THANKS

GOVERNMENT



EDUCATION PROGRAMME



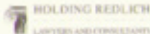
THE AGE
Young Critics'
Award

PRINCIPAL SPONSOR

PLAYWRIGHTS DEVELOPMENT PROGRAMME



ANNAMILA
PTY. LTD.



And the many
individual donors
who support
this programme.

PRINCIPAL SPONSOR

MEDIA AND MARKETING



VOLVO



PRINCIPAL SPONSOR

IN ASSOCIATION WITH

CORPORATE BRAND
MANAGERS



PROVIDER OF VERY
NICE PAPER



MARKETING
STRATEGISTS



MARKET
RESEARCHERS



COMPLETE
MARKETING SERVICES

BRIDE

TRAVEL AND ACCOMMODATION



OFFICIAL AIRLINE
PRINCIPAL SPONSOR



ACCOMMODATION FOR
VISITING ARTISTS



Hotel Sofitel
MELBOURNE

INFORMATION TECHNOLOGY

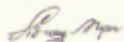
COMPAQ

SUPPLIER OF
COMPUTER HARDWARE



WEBSITE DESIGNERS

CORPORATE SUPPORTERS



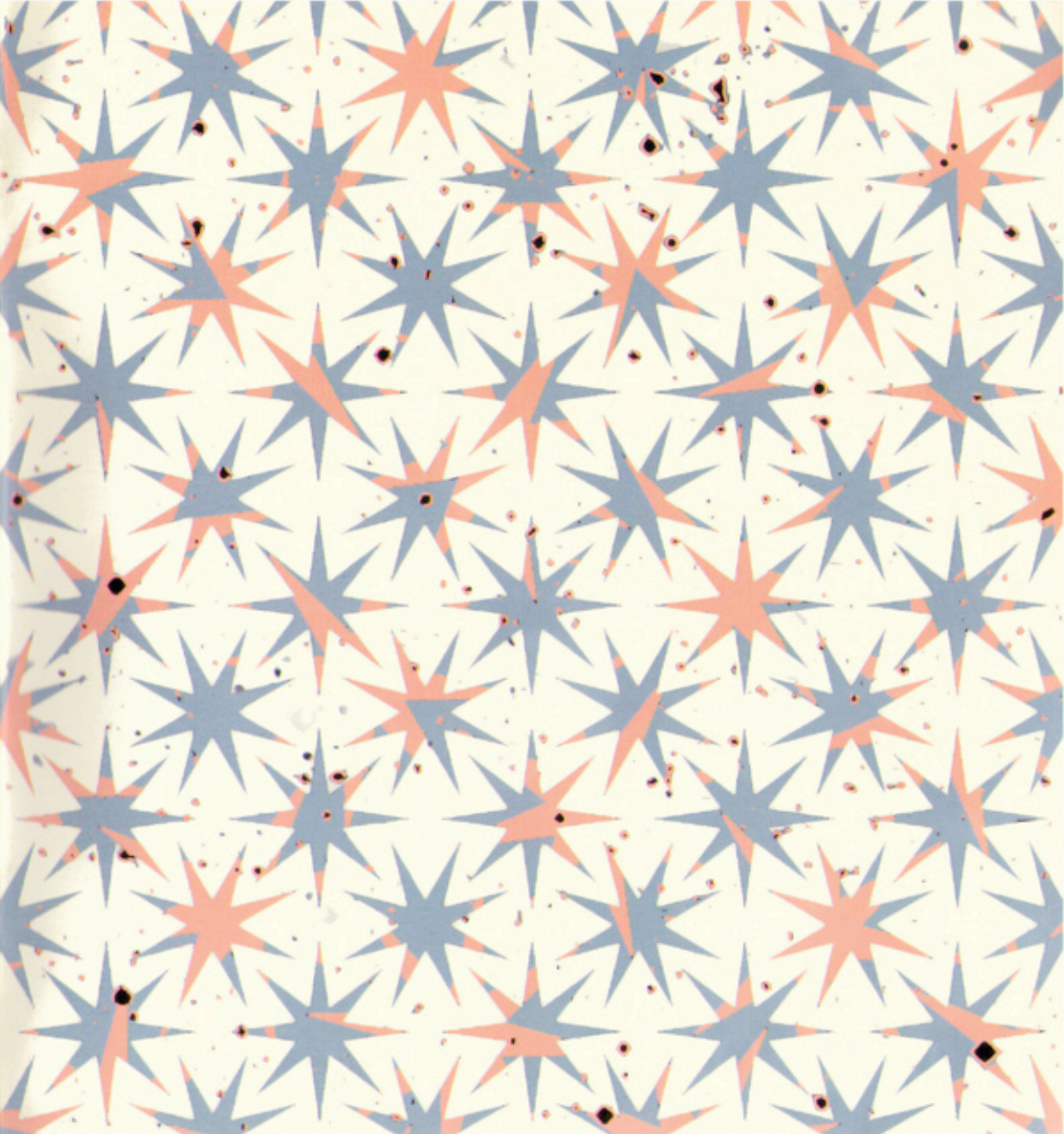
THE SIDNEY MYER FUND



Arthur Robinson
& Hedderwicks

GREY

JMP



PLAYBOX 2000